



# Highgate Society

## November 2019

# Overview of NLWA

- Statutory authority in its own right, established 1986
- Second largest waste disposal authority in the country (by tonnage of waste - 850,000 tonnes municipal waste)
- Area covers the seven north London boroughs - Barnet, Camden, Enfield, Hackney, Haringey, Islington and Waltham Forest

## Main Functions

- transport and disposal of all residual (black bag) waste collected across area
- arrange recycling and composting treatment for most boroughs
- duty to arrange for Re-use and Recycling Centres
- promote waste minimisation

# Strategic aims for the Authority

Joint waste strategy entered into by 8 north London Authorities (7 boroughs and NLWA)

- Recycling and composting targets:-
  - 50% 2020
  - Current recycling level 30% for area
- Customer focussed, environmentally responsible waste management
- Self-sufficiency for waste management within area except for landfill
- Strategic facilities to be procured through NLWA, acting in partnership with Boroughs, for economies of scale
- Borough joint land-use planning for waste (North London Waste Plan)

# Waste management arrangements

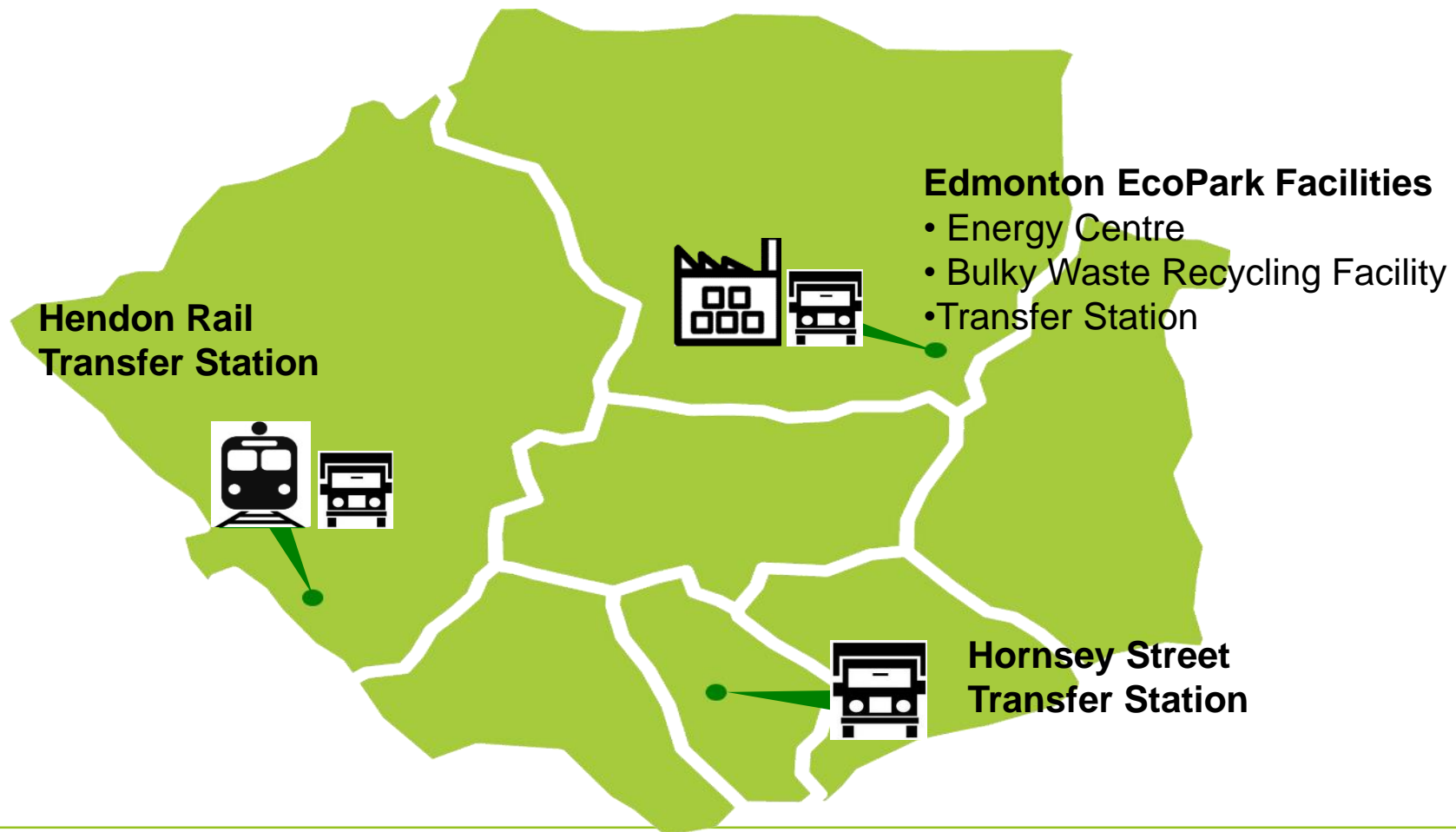
- Management of EfW at EcoPark and other waste services through contract with LondonEnergy waste management contract for
  - residual waste, clinical waste, organic waste, bulk-waste transportation;
  - Re-use and Recycling Centres (RRC operations)
- Other contracts in place to handle
  - c.120,000 tonnes of mixed dry recyclable (commingled) waste (two contracts – Biffa and Bywaters)
  - Recycling/disposal of waste electrical items and tyres
- RRCs all managed by LondonEnergy except LB Enfield site

# Re-use and Recycling Centres



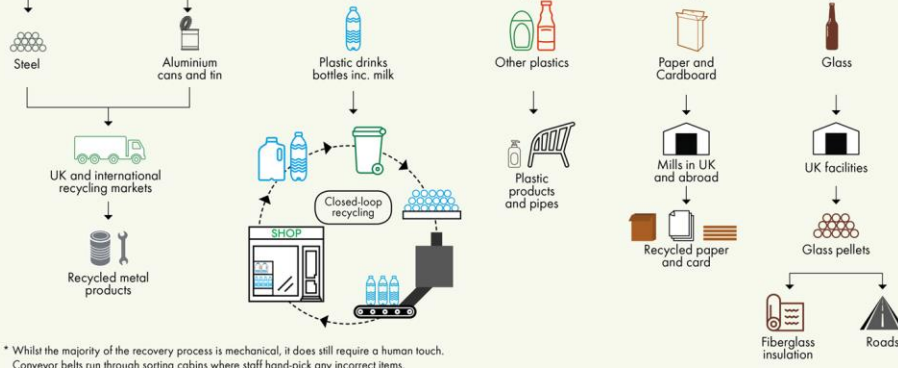
# Where does all the waste go?

## Authority Transfer and Treatment Facilities



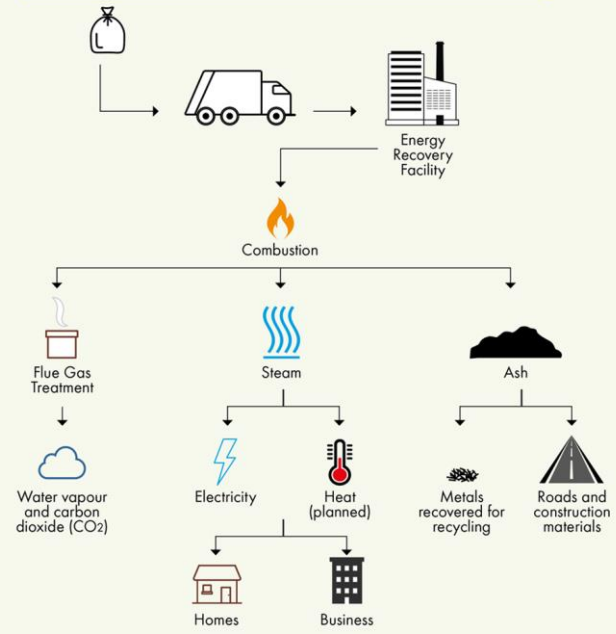
# Residual waste

- Aim to reduce waste to landfill
- Energy-from-waste alternative
- Replacing the current plant at Edmonton EcoPark with a world-class replacement facility
- Use second facility at Greatmoor, Bucks delivered by rail
- The replacement facility converts waste into energy compared with landfill this saves the equivalent of 215,000 tonnes of carbon dioxide per year – equivalent to taking 110,000 cars off the road.
- Will easily meet EA emissions limits
- Perform 60% better than the required safe levels of nitrogen oxides

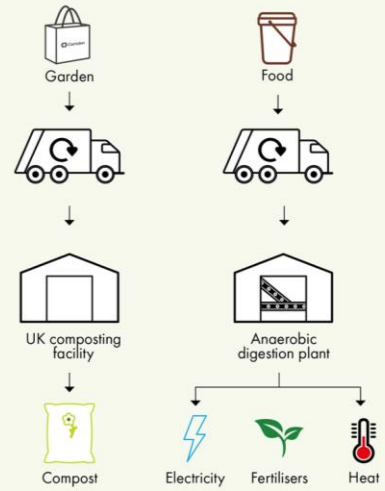


\* Whilst the majority of the recovery process is mechanical, it does still require a human touch. Conveyor belts run through sorting cabins where staff hand-pick any incorrect items.

## General waste



## Other recycling



Avoid creating waste wherever you can, but where it's unavoidable, recycle as much as possible



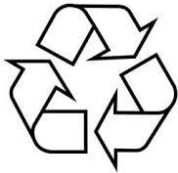
# Recycling logos



**Widely Recycled**



**Compostable**



**The Mobius Loop**



**Home Composting**



**The Green Dot**



**Glass**



**Plastics**



**Recyclable Aluminium**

# Recycling tips



**Food Trays**

Plastic food trays only need a quick rinse to make sure there is no food left inside.

Remove film lids as thin plastics like this can get caught in the recycling machinery. Also remove absorbent pads and any cardboard packaging. Labels can be left on.

Black plastic containers should not be put in the recycling as they are not recognised by recycling sorting machinery.

**Bottles With Pumps**

Pumps and triggers on plastic bottles are likely to be a different material to the plastic bottle so ideally if you can remove them do so.

However, that is sometimes difficult to do so these bottles will be accepted for recycling with the pump left in.

# Waste prevention, at the heart of our strategy

1. Start with Stopping!
2. Recycle Right
3. Make Do and Mend
4. Sharing is Caring
5. Pass It On

# Keep in touch with NLWA

## NLWA websites:

[wiseuptowaste.org.uk](http://wiseuptowaste.org.uk)

[nlwa.gov.uk](http://nlwa.gov.uk)

[northlondonheatandpower.london](http://northlondonheatandpower.london)

 @wiseuptowaste

 @wiseuptowaste

 wiseuptowaste